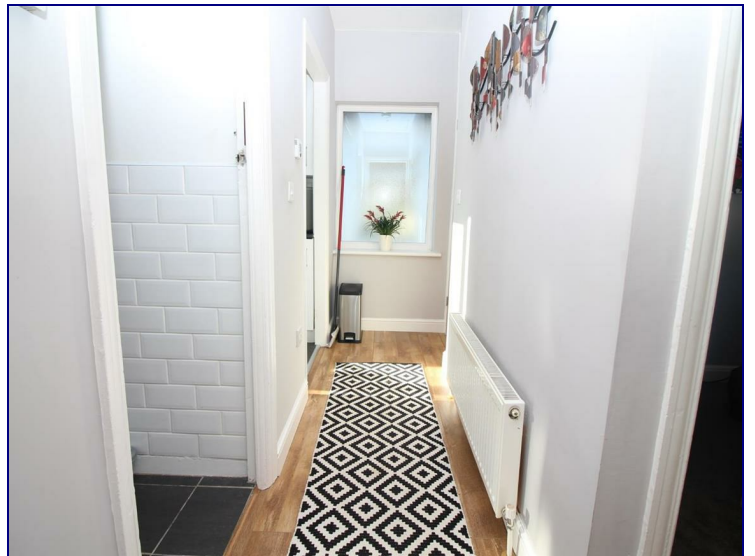


Bowood Road, Enfield, EN3 7LH



£1,350

TWO BEDROOM MAISONETTE WITH PRIVATE GARDEN AVAILABLE NOW!

This property has two double bedrooms along with a spacious living room and three piece bathroom suite.
Good size kitchen with all white goods included

On street parking, close to Brimsdown train station and local bus routes

Loft access available

FRONT DOOR TO

ENTRANCE HALLWAY

With staircase to FIRST FLOOR

LANDING: With doors to:

LOUNGE

13'9 x 10'9 (4.19m x 3.28m)

With double glazed window to front, single radiator. Tv point, telephone point, spotlights, laminated wood style floor

KITCHEN

8'1 x 6'1 (2.46m x 1.85m)

With double glazed window to rear gardens, range of wall and base units work tops over, stainless steel sink unit, plumbing for washing machine, and dishwasher, space for fridge/freezer, electric oven, gas hob, extractor, spotlights, tiled floor

BEDROOM ONE

11'4 x 10'9 (3.45m x 3.28m)

With double glazed window to rear gardens, single radiator spotlights, stripped floorboards

BEDROOM TWO

11'2 x 8'3 (3.40m x 2.51m)

With double glazed window to front, storage, single radiator, carpet, spotlights,

BATHROOM/WC

8'0 x 4'9 (2.44m x 1.45m)

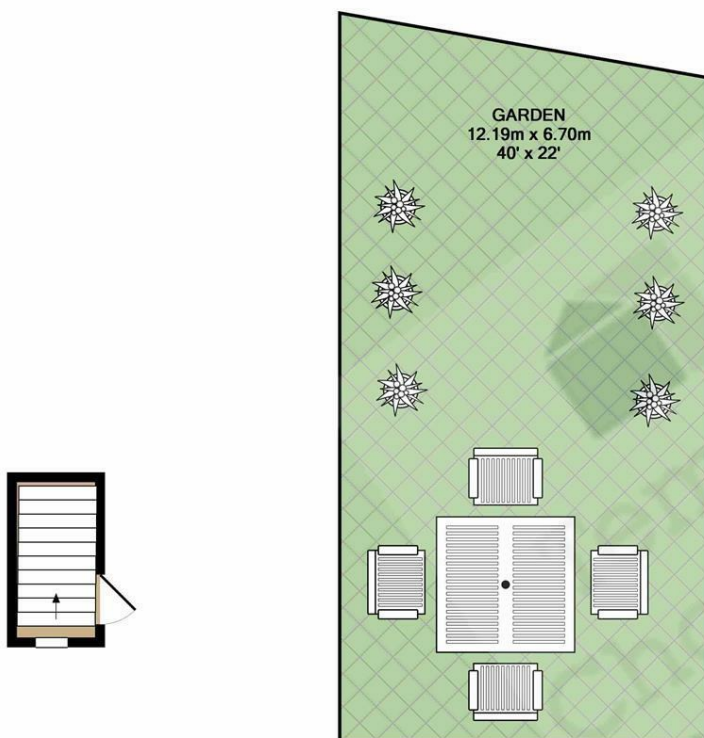
With double glazed frosted window to rear, low level wc, wash hand basin, panel enclosed bath with shower, extractor, single radiator, shaver point, spotlights, part tiled wall, tiled floor.

EXTERIOR: 40'0(OWN REAR PAVED GARDENS

With lighting.

AWAITING EPC RATING

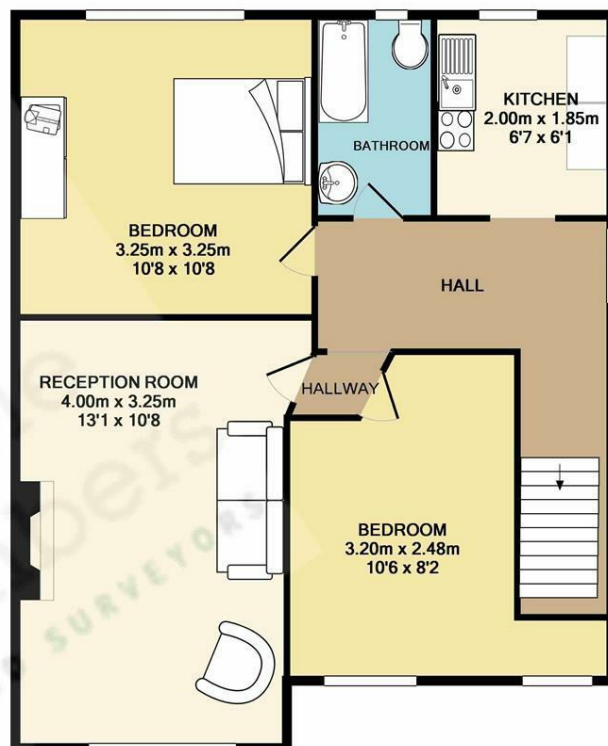




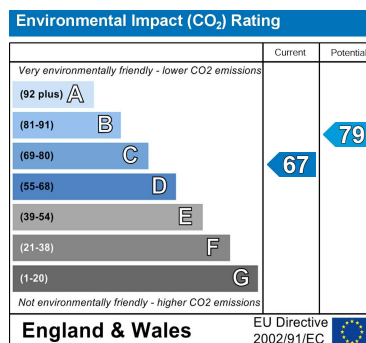
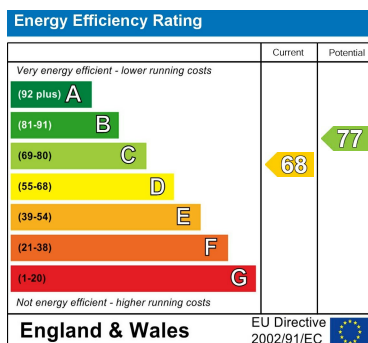
GROUND FLOOR
APPROX. FLOOR
AREA 3.3 SQ.M.
(36 SQ.FT.)

TOTAL APPROX. FLOOR AREA 98.2 SQ.M. (1057 SQ.FT.)

Whilst every attempt has been made to ensure the accuracy of the floor plan contained here, measurements of doors, windows, rooms and any other items are approximate and no responsibility is taken for any error, omission, or mis-statement. This plan is for illustrative purposes only and should be used as such by any prospective purchaser. The services, systems and appliances shown have not been tested and no guarantee as to their operability or efficiency can be given
Made with Metropix ©2018



1ST FLOOR
APPROX. FLOOR
AREA 94.9 SQ.M.
(1022 SQ.FT.)



Associated Offices in London, Essex and Hertfordshire
Kings Head Office Tudor Lodge, Burton Lane, Goffs Oak, Hertfordshire EN7 6SY Tel: 01707-872000

